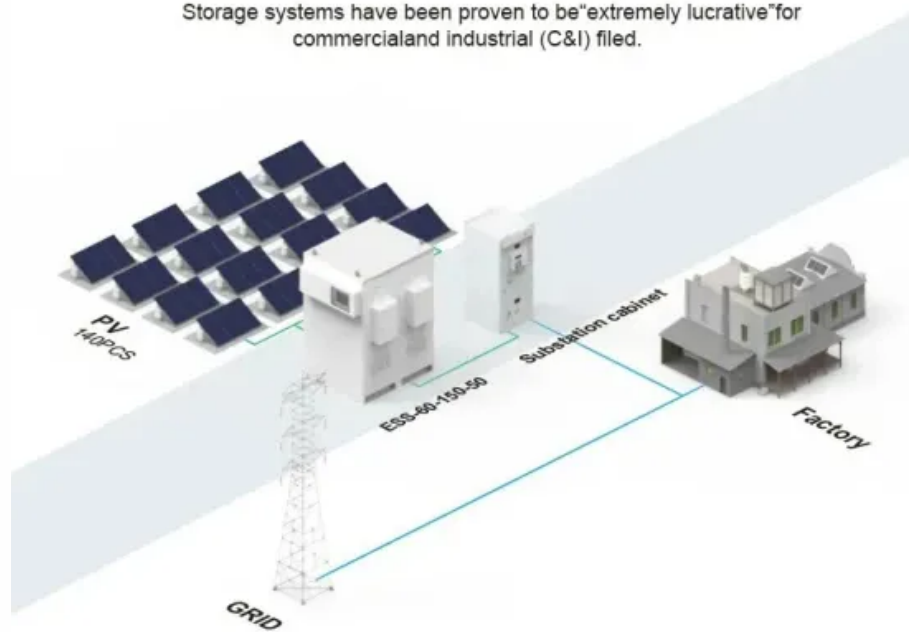


48V network cabinet for transmission nodes

BASIC APPLICATION

Storage systems have been proven to be "extremely lucrative" for commercial and industrial (C&I) filed.



48V network cabinet for transmission nodes



[-48 VDC PDU, Power Distribution Unit, Server Technology](#)

Server Technology -48VDC PDUs control cabinet equipment at remote locations, including colocation facilities and network operation centers - allowing you to reboot locked-up remote servers around

STRIKE 48V - Throne Cycles

With over 12 years in the game, the lineup has evolved from classic track designs to cutting-edge electric models, built for and by the streets.



[48V Lithium Battery Systems for RV, Marine, and Off-Grid Applications](#)

Learn the pros and cons of 48V RV, marine, and off-grid homes. See how a 48V lithium battery system can power high-demand applications.

48V Batteries - WattCycle-US

WattCycle 48V lithium batteries are an excellent choice for those who prioritize reliability, efficiency, and convenience. Each battery comes with advanced safety features, including a built-in battery



[48V Indoor Cabinet DC power up to 81kW - Sky Networks](#)

Compact structure, full integrated functions of rectifier and system make SPS 48/600 2900

typical applications are providing 48V standby power for central

48-volt electrical system

In March 2023, Tesla Inc. revealed that the Tesla Cybertruck and next-generation vehicle would utilize a 48-volt mid-voltage subsystem as a replacement of 12 V system, migrating the low-voltage



48-Volt Mild-Hybrid System Explained

What is a 48-Volt Mild-Hybrid System? Mild hybrids, also called 48-volt mild-hybrid systems, are the least electrified version of hybrid powertrains. Designs vary from model to model, but

[48V DC Rack Power Distribution Units \(-48VDC PDU\)](#)

Using the right remote DC power management solution, the network operations center can quickly restart locked-up remote network servers to ensure that the network is fully operational around the



Alpha Powers DAS Networks

Alpha was brought in to configure a customized power solution that could withstand extremes of temperature, moisture, vibration and shock event of a grid failure. Alpha's solution came packaged

Vicor-48V-eBook

The broad Vicor ecosystem of advanced power

modules, architecture and topologies simplify the transition to 48V by allowing for quick prototyping and implementation of a complete 48V power



Medium voltage IBC (48 V)

High efficiency and high power density 48 V power distribution solutions for hyperscale datacenters and AI servers. Driven by AI and the associated high power requirements, datacenters are transitioning

[Rack Mount DC Distribution Panel , 12V DC , 24V DC , 48V DC , 450](#)

transmission nodesVertiv



SYSTEM OVERVIEW - vertiv

A power system with List 27 distribution cabinet is usually a part of a configured cabinet system. However, there is a stand-alone model available which is tested in a 65°C ambient. It does not fit into

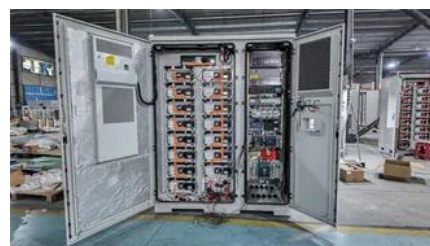


48V Automotive Systems: Why Now?

In this paper, we discuss the growing interest in 48V low-voltage rail systems for electric and hybrid vehicles and how engineers can use them to reduce wire harness size and cost while enabling new

Amazon : 48 Volt Battery

Price and other details may vary based on product size and color. Need help? Discover 48V lithium batteries with advanced BMS protection. Perfect for e-bikes, off-grid power, and backup



energy



[Top 48V Telecom Rectifier Cabinets by ESTEL and](#)

Compare top 48V telecom rectifier cabinets from ESTEL, ABB, Huawei, and others. Discover reliable, efficient, and scalable solutions for



[48-V Systems: What You Need to Know as Automakers Say Goodbye](#)

48-V vehicular power systems have been around for quite some time, mostly used to drive large pumps and actuators in off-road vehicles and other specialized applications.



[Understanding eBike Voltage: 36V vs 48V vs 52V](#)

Learn the real difference between 36V, 48V, and 52V eBike systems. Find out how voltage affects speed, power, and range - plus tips for choosing the right setup for your riding style.

[What is +48V: An Overview of its Importance in Electrical Systems](#)

+48V, also known as positive 48 volts, is a common voltage level used in various electrical systems. It refers to the direct current (DC) electrical potential that is set at 48 volts higher



T-Series , XIM Technology

Cabinet covered with insulation material to prevent condensation. The cabinet is equipped with an emergency door system as standard, which can automatically open the front and rear

doors in case

Contact Us

For catalog requests, pricing, or partnerships, please visit:
<https://www.european-startups.eu>