

# Battery Energy Storage Station Lightning Protection



## Battery Energy Storage Station Lightning Protection

---



### [Lightning surge analysis for cascaded H-bridge converter-based](#)

The lightning overvoltage in the cascaded H-bridge converter-based battery energy storage system (CHBC-BESS) is investigated in this paper. The high frequency (HF) model of CHBC

### [Surge Protectors for Battery Energy Storage Systems \(BESS\)](#)

Today's increased reliance on very sensitive electronics makes surge protection an important topic for Battery Energy Storage Systems or BESS. The Insurance Institute for Business & Home Safety



### "Low Battery Charge" HELP

Have the battery checked at dealers - and just using a multimeter on the battery won't show duff cells in the battery. A new battery-cured mine - any decent auto-electric garage could do it.

### Low battery charge message

The low battery charge message relates to the main battery. On vehicles with stop/start systems and intelligent alternators, the vehicle battery is designed to operate at around 80% SOC, to



### [Lightning and surge protection for battery storage , DEHN](#)



We develop and implement customised protection concepts to protect electrical battery storage systems from lightning and surge damage.

### [Multiple Warning Lights/Error Messages/Battery deterioration](#)

TBH I would look at a replacement battery on the back of that info - but can't you get one from where you bought it? I don't know what a compliance centre is but does the vehicle come with



### **Main Battery Change**

Going to change the service battery in my 15 V40cc D2. Anything I need to be ware of or look out for ??

### **Household Battery Recycling**

Household battery recycling locations Lead-acid batteries, or "automotive type batteries," are banned from disposal. Consumers may bring lead-acid batteries to any Wisconsin retailer that sells these



### **Main Battery Replacement**

Since that battery also supplies power to the ECU memory when the car is switched off, as well as powering the stop/start system , don't ignore it. Like the main battery, Volvo recommend

### **Battery issues**

I've had both batteries replaced (with the correct

models), done a 100 mile trip, overnight smart battery charge, charging voltage is fine, system messages cleared but I am still getting "low



### [The importance of lightning protection of BESS systems](#)

At INGESCO, we've been protecting infrastructures against lightning for over 50 years. Today, we are also working closely with engineering firms, developers,

### [Protection against surges and overvoltages in Battery Energy](#)

The purpose of this paper is to illustrate when and where the installation of surge protective devices (SPDs) is required in Battery Energy Storage Systems (BESS).

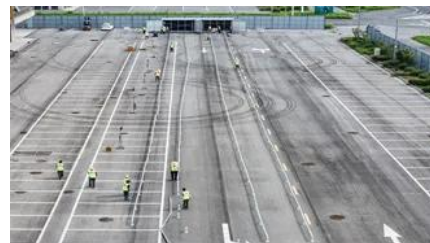


### **Secondary Battery**

My main battery just died, had it replaced with same, and car kept giving me Battery charging, so no stop start. When stop/start worked, it was for about 10 sec, and car would start, with

### **Battery Recycling for Businesses**

Battery Recycling for Businesses Use the chart below to determine how to handle used batteries generated by your business. Batteries that are considered hazardous must be recycled or managed



### **jinli lightning protection device**



In energy storage systems, battery surge protection directly impacts system safety and lifespan. Intelligent lightning protection boxes specifically

## Battery Storage Systems

Your electric battery energy storage systems need protection. See how DEHN's transient voltage, lightning, and surge solutions can keep them safe.



### [Low battery charge error , Volvo V40 Forums](#)

Hello everyone, I just bought my first car, a 2014 Volvo V40 T3, and a warning appears on the dashboard that says 'low battery charge.' The car is recently

### [Advanced Lightning Protection for BESS , Scientific](#)

Discover how advanced lightning protection strategies enhance the operational resilience of BESS, ensuring reliable and continuous energy storage.



### [Lightning Protection for Battery Energy Storage Systems: Essential](#)

Summary: Lightning protection for battery energy storage stations (BESS) is critical to ensure safety, minimize downtime, and protect investments in renewable energy infrastructure.

### [Lightning Surge Analysis for DC Direct-Mounted Battery Energy](#)

Based on the computed overvoltages, a coordinated protection scheme is proposed, and the required lightning impulse withstand voltages (RLIWV) for ESSM post insulators are derived following an



## Contact Us

---

For catalog requests, pricing, or partnerships, please visit:  
<https://www.european-startups.eu>