

Charging between lithium battery packs



Overview

Can you charge batteries in parallel safely?

The short answer is yes. But the real answer is: it depends on how well you understand what's happening electrically.

Charging between lithium battery packs

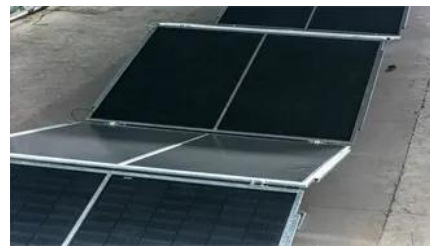


batteries

2 Don't use a TP4056 for charging LiFePO 4 batteries; it won't stop charging until about 4.2 V has been reached and while some LiFePO 4 batteries will probably handle that without

[How to Charge Two Batteries in Parallel: Step-by-Step](#)

In this article, we'll guide you on charging two batteries in parallel, explain key considerations and safety tips when batteries in parallel charging.



[What is the maximum charging voltage of a Li-Ion battery?](#)

I will design a charging circuit for an ICR26650 3.7 V Li-Ion battery. I'm considering using the BQ24070 chip in the design. The battery charging voltage of this chip is given as 4.2 V.

[Batteries and Chargers Connected in Series , Battery](#)

There are many ways to connect a group of batteries in both series and parallel at the same time. This is common practice in many battery power appliances,



charging

It will just make much more sense to buy a Type-C PD charger if your devices support it, rather than still dealing with the problem of which USB adapters you can use to convert to Type-C

Charging lead-acid batteries?

Charging lead-acid batteries with a power supply
Lead-acid batteries can be charged manually with a commercial power supply featuring voltage regulation and current limiting.
Calculate



[How can I tell charge-only USB cables from USB data cables?](#)

I'd throw out all the "charge-only" cables. As the other answers have indicated, charging over a cable with the data lines disconnected is slow at best, and overloads the port at worst. If you want to inhibit

[Lithium Series, Parallel and Series and Parallel](#)

Connecting multiple lithium batteries into a string of batteries allows us to build a battery bank with the potential to operate at an increased voltage, or with increased capacity and runtime, or both.



[Why is charging with Lithium batteries with a small load dangerous](#)

I'm well aware of the best practices for charging lithium chemistry batteries, and how the charges themselves work. I've never had a water tight explanation on why having a load on a battery

[Parallel Battery Charging: Are You Doing It Right?](#)

Discover safe ways to charge batteries in parallel. Avoid common mistakes, balance current, and extend battery life like a pro.



How to Charge a Lithium Battery Pack?

Charging a lithium battery pack properly is



[What Are the Correct Charging Methods for Lithium](#)

Proper charging is crucial for ensuring the optimal performance, longevity, and safety of lithium battery packs. By understanding the common

crucial for maintaining its performance and longevity. Here's a step-by-step guide on how to do it safely



batteries

Introduction Various resources state that the optimal method of charging a li-ion cell -- such as one found in a mobile phone -- is to charge at a constant current (usually $<1C$) until a

[How to Charge Lithium Batteries: Complete Guide to](#)

The optimal charge range for most lithium battery applications falls between 20% and 80% state of charge, though specific recommendations may



How to Charge Lithium Battery

Learn how to charge lithium battery safely and effectively with expert tips for Li-ion, LiFePO₄, and lithium polymer batteries. Discover charging

[How to Balance Charge a Multi-Pack Lithium Battery Bank](#)

Our complete guide teaches you to safely balance charge a multi-pack Outbox lithium battery bank. Learn the correct methods for series &





[How to Calculate the time of Charging and Discharging of battery?](#)

How do I calculate the approximated time for the Charging and Discharging of the battery? Is there any equation available for the purpose? If yes, then please provide me.

[Creating a 12.6 V 3S Lithium-ion Charging Circuit from 5 V USB-C](#)

I am constrained to the following: 3S lithium-ion battery of 2600 mAh charging at 1 A, USB-C connector with 5 V, the BMS is already included with the battery. My main question is if this



batteries

Question How long should you wait after usage before charging? For example, if I use a battery powered string-trimmer or lawn-mower and the battery has gone empty (and probably quite warm,) how long

[How to Safely Charge Lithium Batteries in Parallel](#)

Learn safe and efficient parallel battery charging for lithium packs. Avoid overheating, imbalance, and risks with proper tools and best practices.



Contact Us

For catalog requests, pricing, or partnerships, please visit:
<https://www.european-startups.eu>