

# Distributed Energy Storage Communication Power Supply Cabinet 47U



**RW-F10.2**  
UN38.3 / IEC62619 / CE  
CEI 0-21 / VDE2510-50  
CEC

[VIEW MORE](#)



## Distributed Energy Storage Communication Power Supply Cabinet 4

---



### 47U ST-E Series , Eight Limited

Reliable structure, static loading capacity: 1500KG Adjustable feet and castors options are available Baying cabinets together easily Double mesh front door & rear door, steel rear door Top and bottom

### DistributedCOM permission settings Error 10016 -should I resolve this?

Inside W10's Event Viewer, I see an error with ID of 10016 (DistributedCOM). Its error description is - The application-specific permission settings d



### Event ID 10016, DistributedCOM

Also, the outcome is that, under normal conditions, the Microsoft Distributed Transaction Coordinator (MSDTC) service establishes a secure connection with the local System (Computer), not

### [DistributedCOM error EventID 10016 Immersive Shell](#)

Hi, Is this something I should be concerned about ? I've tried the following solution to no avail my event viewer is still flooded with this error Log



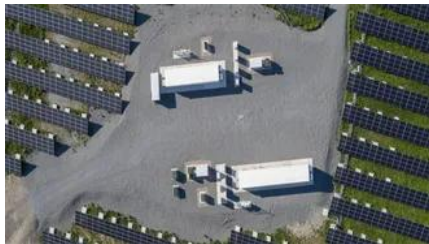
### Communications & Power Industries

Communications & Power Industries (CPI) provides microwave, radio frequency (RF), power and control solutions for defense,

communications, medical,

[Do I need "Distributed Link Tracking Client"?](#)

Do I need "Distributed Link Tracking Client"?  
Read up on it, cant quite make it out if it's to my disadvantage (and how) in every day Computer life if I have it disabled.



**DistributedCOM Error. Solved**

Distributed Component Object Model (DCOM) is a proprietary Microsoft technology for communication between software components on networked computers. DCOM, which originally

**Distributed Energy Power Cabinet 47U**

This 47U server cabinet comes fully assembled for quick and easy deployment with pre-installed casters that let you maneuver it over a level, smooth, stable surface and through a standard two-meter



**Event ID 10016, DistributedCOM**

Hi @ parsonm To solve COM errors, if you don't follow the Microsoft note, get a cli utility by Microsoft called dcomperm. Its source code is included with the Microsoft Windows SDK for

[47u power cabinet industrial monitoring equipment network server](#)

47u power cabinet industrial monitoring equipment network server cabinet integrated communication cabinet





### **DistributedCOM Event ID 10000**

What should I do? Log Name: SystemSource: Microsoft-Windows-DistributedCOMDate: 4/27/2020 4:26:30 PMEvent ID: 10000Task Category: NoneLevel: ErrorKeywords: ClassicUser: SAM

### **Need Help with DistributedCOM 10010**

In this video, i will guide you on how to fix DistributedCOM Event ID 10016 error in Windows 10 and Windows 11.



### [Distributed Energy Communication Power Supply Cabinet 47U](#)

Whether for off-grid power systems, backup emergency power, PV+storage integration or large zero-carbon parks, our products feature advanced thermal management, PCS and EMS integration,

### [SAN JOSE DISTRIBUTED ENERGY STORAGE SYSTEM QUOTE](#)

Energy Storage Cabinet is a vital part of modern energy management system, especially when storing and dispatching energy between renewable energy (such as solar energy and wind energy) and



### [Windows 10 Event ID 10010 and 10016 Errors With DistributedCOM](#)

I am having a number of events that seem to be located repeatedly with the source: DistributedCOM Event ID: 10010 and Event ID: 10016 also getting rep

[Store apps close immediately, Event 10010 with DistributedCOM](#)

Update: Just came back from re-installing and re-registering all Windows Store Apps (even the Store itself I noticed) and still having the same issue. Did a reboot just in case after



## Contact Us

---

For catalog requests, pricing, or partnerships, please visit:  
<https://www.european-startups.eu>