

# Does the tool battery have low voltage protection



## Overview

---

Low voltage protection is a safety mechanism integrated into battery systems that prevents the battery from discharging below a certain voltage threshold.

## Does the tool battery have low voltage protection

---

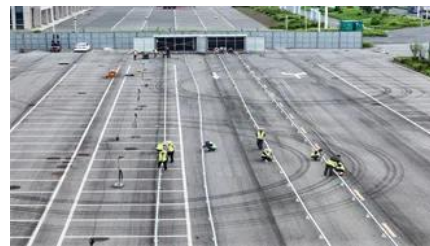


[DOES , definition in the Cambridge English Dictionary](#)

DOES meaning: 1. he/she/it form of do 2. he/she/it form of do 3. present simple of do, used with he/she/it. Learn more.

### DOES Definition & Meaning , Dictionary

DOES definition: a plural of doe. See examples of does used in a sentence.



[M18 low voltage cutoff is below the recommended](#)

The battery also does not have low-voltage cutoff - there are no transistors in the battery that can cut the power. Instead, low-voltage cutoff is done by the battery

### [5 Costly Battery Mistakes a Low Voltage Disconnect Prevents: A 2026](#)

While the concept is similar, most handheld power tool batteries have their own proprietary protection circuits built directly into the battery pack and the tool itself.



[Do vs. Does: The Simple Guide to Subject-Verb Agreement](#)

Stop guessing between do vs. does! Learn the easy rules for questions, negatives, and emphasis with our 10-second subject-verb chart.

### [Understanding Dewalt Batteries: Do They Have Low Voltage](#)

Low voltage protection is a safety feature designed to prevent a battery from discharging below a certain voltage level. This is important because discharging a battery too much can lead to



### **does verb**

Definition of does verb in Oxford Advanced Learner's Dictionary. Meaning, pronunciation, picture, example sentences, grammar, usage notes, synonyms and more.

### ["Do" vs. "Does": How Do You Tell The Difference?](#)

Both do and does are present tense forms of the verb do. Which is the correct form to use depends on the subject of your sentence. In this article, we'll explain the difference between do



### [Understanding Battery Protection System in Makita Tools](#)

Makita, a well-known manufacturer of power tools, has designed their tools with a specialized Battery Protection System. This system helps safeguard the battery, ensuring it operates effectively without

### [How to Use Do and Does in English \(Rules + Examples\) , Papora](#)

Learn how to use do and does with simple rules, clear examples, and real sentence practice for questions and negatives.





[DOES definition and meaning , Collins English Dictionary](#)

does in British English (dʒ ) verb (used with a singular noun or the pronouns he, she, or it) a form of the present tense (indicative mood) of do 1

### [Do Ryobi Batteries Have Low Voltage Protection?](#)

Of course, power tools that run on batteries should have some sort of low-voltage protection. If the voltage is lower than what's required, the device



### **Grammar: When to Use Do, Does, and Did**

We've put together a guide to help you use do, does, and did as action and auxiliary verbs in the simple past and present tenses.

### **Battery Adapter for Milwaukee & DeWalt**

On the underside of the adapter is a small low voltage cutoff board ("blinker board") to protect the battery from over discharge. More information on the Blinker



### **DOES Definition & Meaning**

The meaning of DOES is present tense third-person singular of do; plural of doe.

### [Using "Do" and "Does": Grammar Rules, Examples, and Practice](#)

Discover when to use do and does in English grammar. Learn the rules for questions and

negatives, see clear examples, and practice with easy exercises to master correct usage.



### [Do Ryobi Batteries Have Low Voltage Protection?](#)

Yes, Ryobi batteries do have low voltage protection-but how it works and why it matters might surprise you. If you rely on Ryobi power tools for DIY projects or professional work, battery

### [What is a Low Voltage Cutoff and Why Your Boombox May Need One](#)

A Low Voltage Cutoff (LVC) is a circuit that disconnects the battery when its voltage drops below a safe threshold. For lithium-ion cells, draining past roughly 3.0 volts per cell can cause



### **Do Makita LXT batteries have low-voltage**

I found that some do, and some don't. I don't have many LXT batteries, so I don't quite have the full picture. REFERENCES Project Farm: o

### **Low voltage cutoff for tool battery.**

I am not finding an adjustable low voltage cutoff option that goes above 60V. I will eventually fix the primary problem by moving the solar up higher on a ridge to get better winter sun.



## Contact Us

---

For catalog requests, pricing, or partnerships, please visit:  
<https://www.european-startups.eu>