

Equipment that uses wind to generate electricity



Overview

A wind turbine is a device that the of into. As of 2024 , hundreds of thousands of , in installations known as , were generating over 1,136 of power, with 117 GW added each year. Wind turbines are an increasingly important source of intermittent , and are used in many countries to lower energy costs and reduce reliance on. On.

Equipment that uses wind to generate electricity



[Equipment & Tool Rentals , Los Angeles, CA , Sunbelt Rentals](#)

Visit this location for help with all of your general equipment rental needs today. Need help finding the right equipment? Call us at 866-246-1984 and we will make it happen. Have any questions? Talk

Electricity generation from wind

Wind turbines use blades to collect the wind's kinetic energy. Wind flows over the blades creating lift (similar to the effect on airplane wings), which causes the blades to turn. The blades are



EquipmentShare

Rent the newest construction equipment and tools, track your entire fleet and put your assets to work with EquipmentShare at one of our 385 locations.

PDQ Equipment

PDQ Equipment was established in 1952 and has grown to become one of California's largest independent equipment rental companies. With continuous expansion we have grown to over 300



[Construction Equipment Dealership Locations , Coastline Equipment](#)



[CAT Dealer In Los Angeles , Quinn Company](#)

As the authorized dealer of Cat (R) equipment for the region, we provide the complete line of the latest compact track loaders, wheel loaders, skid steer loaders, paving rollers, hydraulic excavators and



[United Rentals - Trusted Equipment Fleet & Worksite Solutions](#)

United Rentals provides 3300+ equipment and tool classes for industrial & construction sites across the United States and Canada. Rent heavy equipment now.

Coastline Equipment offers new and used John Deere and Wirtgen equipment, rentals, parts, service, and more at our locations across ID, NV, and CA. Find a location near you here.



Wind turbine

OverviewHistoryWind power densityEfficiencyTypesDesign and constructionTechnologyWind turbines on public display

A wind turbine is a device that converts the kinetic energy of wind into electrical energy. As of 2024 , hundreds of thousands of large turbines, in installations known as wind farms, were generating over 1,136 gigawatts of power, with 117 GW added each year. Wind turbines are an increasingly important source of intermittent renewable energy, and are used in many countries to lower energy costs and reduce reliance on fossil fuels. On



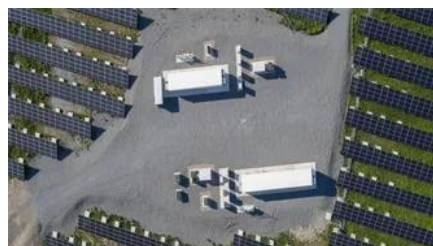
Heavy Equipment for Sale & Rental in Southern California , Scott Equipment



[Forklift Dealers Southern California, Los Angeles, Orange County](#)

Select Equipment has been serving the Southern California area as trusted forklift dealers since 1968. Industries rely on us consistently for heavy duty forklifts and high-quality equipment, industrial

Scott Equipment is your trusted dealer in Southern California offering heavy equipment sales, rentals, parts & service. Browse our inventory of New Holland, Kobelco & Develon machines.



[New & Used Heavy Equipment for Sale or Rent . Equipment Trader](#)

Sell, search, rent or shop online a wide variety of new and used heavy equipment like tractors, excavators, skid steers, forklifts et al via Equipment Trader.

los angeles heavy equipment for sale

BRAND NEW TREADMILL from SUNNY HEALTH & FITNESS. Already assembled. Peterbilt 365 Strong Arm Super 10 Dump Truck Excellent Condition ! Need to haul off Used Oil/Hydraulic fluid/Diesel



How Do Wind Turbines Work?

Wind turbines work on a simple principle: instead of using electricity to make wind-like a fan-wind turbines use wind to make electricity. Wind turns the propeller-like blades of a turbine around a rotor,

Contact Us

For catalog requests, pricing, or partnerships, please visit:
<https://www.european-startups.eu>