

# House inverter system factory in Singapore



## Overview

---

In this article, we will discuss the top 10 inverter manufacturers in Singapore, and the top brands that are most popular among Singaporeans.

## House inverter system factory in Singapore

---



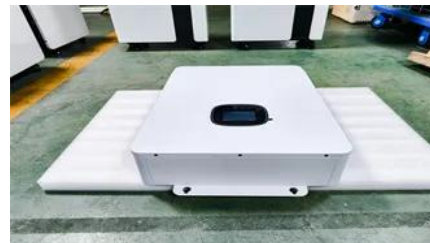
[Deye Inverter Singapore , Solar Inverter & Energy Storage Solutions](#)

Deye Inverter Singapore - Leading manufacturer of solar inverters, hybrid inverters, microinverters and energy storage solutions for residential and commercial applications.

### Sweep's Library

Smoke Entering House Through Unused Fireplace

Q: We read your explanation of why the smell of smoke can enter a house through an unused chimney, but our problem is a little different. We have



[Quadrafire Castile \(2001\) model smoke in house after Exhaust pipe](#)

Ok first post but I have been a lurker here for the past year and found many of the post very helpful. I bought a house last fall with a Quadrafire Castile. I was having a problem with the

[Creosote running down outside of pipe, inside of house](#)

The past few days, creosote is running down the outside of the pipe that is inside the house, between the ceiling and the stove. The exterior pipe looks fine. Also, this fall we had resealed



[Pellet stove in basement to heat whole house?](#)

Hey guys, So I have a very small house in Western MA (main floor just under 900sq ft + walkout basement/built in garage which will not



[Top 65 Solar Inverter Companies in Singapore \(2026\) , ensun](#)

The company offers a wide range of solar inverters as part of their residential solar solutions, ensuring they can meet various needs and price points. They also provide a 15-year maintenance guarantee

be heated, about 700sq ft of basement that will be



[crawlspace whole-house dehumidifier vibration/noise](#)

I've installed a whole-house dehumidifier in my crawlspace. For various reasons (primarily drainage), I hung it from the floor joists above, using a simple platform made of 2x4s supporting a

### Two story house

The house is fairly well insulated with good windows. It runs fairly stable around 60 on second floor. I run first floor at around 65. this is with temps in the teens at night and twenties



### 100# Propane Tank to House

The 500# tank is probably connected with a copper line with a fitting on the end to mate to the tank's nozzle. To use the 100# tank first compare the nozzle on it to the 500# tank and see if they

### 2009 House with Fireplace Insert

Our house was built in 2009 and it has a beautiful fireplace with an insert. We didn't do

too many fires last winter (maybe 1) but this year are wanting to use it more.



**Green Energy Distribution Pte. Ltd.**

We have the largest stock pile of SMA and Fronius inverters in Singapore providing ready stock for our customers across South East Asia. Sunergy Solar Pte Ltd is also the official technical and warranty

[Film on inside of house windows and dust on cabinet doors and other](#)

This is the first year I've had an issue with a film on the windows in the house almost as if a smoker lived here-no one smokes! Also noticing an increased level of dust-or maybe it's the same



[Can hot embers come out of your pellet stove and burn your house down](#)

As far as a fire in the house, as long as the stove is maintained right and installed properly, there is more chance that a bolt of lightning will hit your chimney and burn the house down

## Contact Us

---

For catalog requests, pricing, or partnerships, please visit:  
<https://www.european-startups.eu>