

# How many degrees of electricity does the wind blade generate per hour



## Overview

---

The 0 degree blade produced no voltage output, the 10 degree blade produced an average output of 2.4 mV with a standard deviation of 0.

## How many degrees of electricity does the wind blade generate per hour



### MANY Definition & Meaning

The meaning of MANY is consisting of or amounting to a large but indefinite number. How to use many in a sentence.

### [How Much Energy Does a Wind Turbine Produce?](#)

Now that we've established a baseline for wind turbine efficiency, it's time to answer one of our most frequently asked questions: precisely



### [How Much Power Does a Wind Turbine Generate Per](#)

Understanding how much power a wind turbine generates per hour is crucial for assessing the viability and effectiveness of wind energy projects. This

### Wind Turbine Calculator

The wind turbine calculator finds the power output, efficiency, RPM, torque, and revenue of a wind turbine (either HAVT or VAWT).



### [How Much Electricity Does A Wind Turbine Generate Per Hour](#)

Modern wind turbines begin to produce electricity when wind speed reaches 6-9 miles per hour (mph) and have to shut down if it exceeds 55 mph (88.5 kilometers per hour).

### Many: Definition, Meaning, and Examples

"Many" describes a large quantity of countable items or people, commonly used when the exact total isn't important or known. It is one of the most essential quantifiers in the English language,



### **MANY , English meaning**

We use the quantifiers much, many, a lot of, lots of to talk about quantities, amounts and degree. We can use them with a noun (as a determiner) or without a noun (as a pronoun).

### [The Power of Wind: What Effect Does Blade Angle Have on the](#)

The hypothesis of my project is that the blades with a 30 degree angle will produce the most voltage because research suggests that a blade with a tilt at about 30 degrees will accurately lift and spin at



### **Electricity generation from wind**

Wind turbines use blades to collect the wind's kinetic energy. Wind flows over the blades creating lift (similar to the effect on airplane wings), which causes the blades to turn. The blades are

### **Blade Pitch**

Blade pitch is a critical factor in the overall efficiency of a wind turbine and the generation of wind energy. By adjusting the blade pitch to capture the maximum amount of wind energy,



### [How to calculate wind energy and wind turbine energy](#)

The wind energy calculator allows you to calculate the wind energy and wind turbine



[Wind Energy and Power Calculations , EM SC 470:](#)

The output of a wind turbine is dependent upon the velocity of the wind that is hitting it. But as you will see, the power is not proportional to the wind velocity.



[Many Definition & Meaning , YourDictionary](#)

Many definition: Amounting to or consisting of a large indefinite number.



**MANY Definition & Meaning , Dictionary**

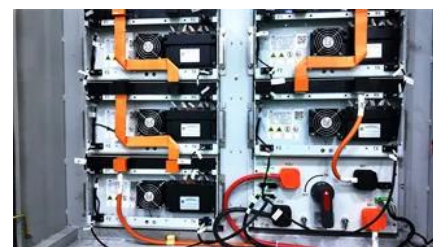
MANY definition: constituting or forming a large number; numerous. See examples of many used in a sentence.

energy using the equations defined above. You need to enter the wind



[How Much Electricity Does a Wind Turbine Generate](#)

When we talk about how much energy does a wind turbine produce per hour, wind speed is, for sure, the main thing. It's the lifeblood of a wind



**many determiner**

Definition of many determiner in Oxford Advanced Learner's Dictionary. Meaning, pronunciation, picture, example sentences, grammar, usage notes, synonyms and more.



[MANY definition and meaning , Collins English Dictionary](#)



You use many to indicate that you are talking about a large number of people or things. I don't think many people would argue with that. Not many films are made in Finland. Do you keep many books

## Contact Us

---

For catalog requests, pricing, or partnerships, please visit:  
<https://www.european-startups.eu>