

How much tax is charged for outdoor power supply in Brunei



✓ LIQUID/AIR COOLING

✓ PROTECTION IP54/IP55

✓ PCS EMS

✓ BATTERY /6000 CYCLES



Overview

Brunei does not have a Value Added Tax or equivalent consumption-based tax.

How much tax is charged for outdoor power supply in Brunei



Tax laws Brunei

Brunei offers a highly favorable tax regime with no personal income tax, no VAT/GST, no capital gains tax, and no inheritance tax. The corporate tax rate is relatively low at 18.5%, and small

MUCH , English meaning

MUCH definition: 1. a large amount or to a large degree: 2. a far larger amount of something than you want or need. Learn more.



Tax in Brunei , By country , ICAEW

In-depth guide covering a wide range of corporate and individual tax topics in over 150 territories. Includes useful summaries of significant developments and table of tax rates and due dates.

[Understanding VAT and Sales Tax Requirements in](#)

This blog post provides a comprehensive overview of Value Added Tax (VAT) and sales tax in Brunei, focusing on the current tax framework,



[Much Definition & Meaning , YourDictionary](#)

Much definition: Great in quantity, degree, or extent.

MUCH Definition & Meaning

The meaning of MUCH is great in quantity, amount, extent, or degree. How to use much in a sentence.



What does much mean?

Much is an adjective that refers to a large quantity, amount, or degree of something. It indicates a substantial extent or level of something, generally implying a significant or notable difference or

[MUCH definition and meaning . Collins English Dictionary](#)

You use much to indicate the great intensity, extent, or degree of something such as an action, feeling, or change. Much is usually used with 'so', 'too', and 'very', and in negative clauses with this meaning.



A Guide to Taxation in Brunei

For resident companies in Brunei, there is no withholding tax on dividends, interest, royalties, and fees for technical services. Non-resident

Customs Import Duty

Most import duties are imposed based on Ad Valorem rate and only some taxes are based on specific rate. Ad Valorem is the percentage, for example, 20% of the



Tax System In Brunei: How It Works

The Goods and Services Tax, commonly known as GST, is a value-added tax (VAT) that was introduced in Brunei in October 2019. GST is levied on most

Brunei

Brunei generally has very low tariffs. The Customs Import and Excise Duty Amendment Order 2017 was created with the aim of facilitating trade, attracting FDI, and fulfilling commitments

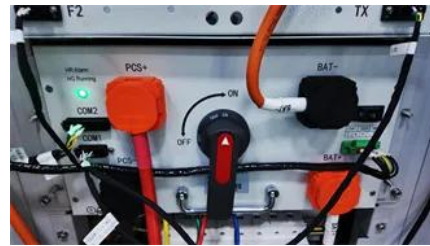


Brunei Darussalam Import Duty Calculator

Brunei Darussalam calculates using the CIF method, which means the import duty and taxes are calculated based on the value of the imported goods as well as shipping costs. Click [here](#) or use our

Brunei's Taxation at a Glance

Brunei does not have a Value Added Tax or equivalent consumption-based tax. Click [here](#) for information on tax administration.



Brunei Darussalam

Most import duties are levied based on an ad valorem rate, with only a few taxes applied at a specific rate, except when the total amount of import duty is less than BND 1, no import duty

Contact Us

For catalog requests, pricing, or partnerships, please visit:
<https://www.european-startups.eu>