

How to select parameters for solar inverters

**FLEXIBLE SETTING OF
MULTIPLE WORKING MODES**



How to select parameters for solar inverters



HTML select dropdown list

Learn about creating and using HTML select dropdown lists with helpful examples and community discussions on Stack Overflow.

Inverter Power Requirement Calculator

Inverter Power Requirement Calculator Size solar inverters using running, surge, and reserve. Compare watts, VA, current, and daily energy. Build dependable systems with smarter capacity planning from



[How to Design Inverter for Solar Power System . Step](#)

We'll figure out how much power you need from appliances and choose the right inverter for your solar panels (voltage, grid connection). Then

sql server

The simple difference between select Into and Insert Into is: --> Select Into don't need existing table. If you want to copy table A data, you just type Select * INTO from A.



[The difference between SELECT * and SELECT A.*](#)

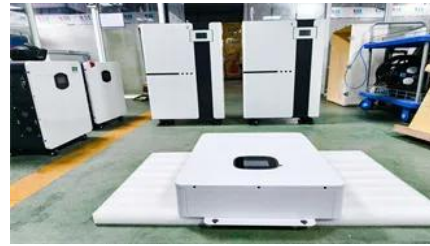
Just for kicks and giggles, I put the SELECT .* into SQL Server and it gave me Invalid column prefix '': No table name specified - you can, however, use a table alias so that it's SELECT a.*, [column



list

[How To Read And Interpret An Inverter Specification](#)

Whether setting up a solar power system, ensuring reliable power for your home, or optimizing an electric vehicle (EV) setup, knowing the technical details helps you



Contact Us

For catalog requests, pricing, or partnerships, please visit:
<https://www.european-startups.eu>