

Integration of wind solar and storage projects



Integration of wind solar and storage projects



7: Techniques of Integration

We have already discussed some basic integration formulas and the method of integration by substitution. In this chapter, we study some additional techniques, including some ways of



Integral Calculator o With Steps!

Our calculator allows you to check your solutions to calculus exercises. It helps you practice by showing you the full working (step by step integration). All common integration techniques and even special



Introduction to Integration

Integration is a way of adding slices to find the whole. Integration can be used to find areas, volumes, central points and many useful things.



[Integral Calculator: Step-by-Step Solutions](#)

Free Integral Calculator helps you solve definite and indefinite integration problems. Also double, triple and improper integrals. Answers, graphs, alternate forms.

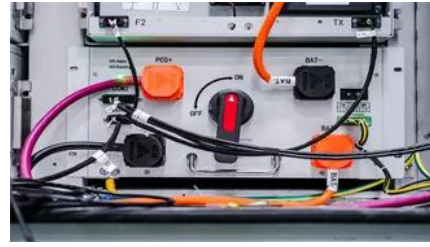


Integral Calculator

Integration is the union of elements to create a whole. Integral calculus allows us to find a function whose differential is provided, so integrating is the inverse of differentiating.

Integral

In mathematics, an integral is the continuous analog of a sum, and is used to calculate areas, volumes, and their generalizations. The process of computing an integral, called integration, is one of the two



[Integrating solar and wind energy into the electricity grid for](#)

The European Union is pushing the rise of hybrid projects that combine solar, wind, and storage solutions because of its lofty ambitions for the integration of renewable energy.

Integration

Integration is finding the antiderivative of a function. It is the inverse process of differentiation. Learn about integration, its applications, and methods of integration using specific rules and formulas.



Integral Calculator

The integral calculator allows you to enter your problem and complete the integration to see the result. You can also get a better visual and understanding of the function and area under the curve using

[Integral Sign - Definition, Formula & Examples](#)

The integral sign (\int) is the elongated S-shaped symbol used in calculus to indicate that you are finding the integral of a function. It tells you to sum up infi





[Integrals , Integral Calculus , Math , Khan Academy](#)

Test your knowledge of the skills in this course. Start Course challenge. The definite integral of a function gives us the area under the curve of that function. Another common interpretation is that the

Integrating Solar and Wind - Analysis

This report calls for strategic government action, enhanced infrastructure, and regulatory reforms to ensure the successful large-scale integration of solar PV and wind in order to meet global



Contact Us

For catalog requests, pricing, or partnerships, please visit:
<https://www.european-startups.eu>