

Lead-acid battery cabinet IP66 maintenance service



Overview

This manual provides Maintenance Procedures for Gill Dry-Charged Lead Acid Aircraft Batteries manufactured under FAA Parts Manufacturer Approvals (PMA).

Lead-acid battery cabinet IP66 maintenance service



Flooded Lead-Acid Batteries IOM

This manual contains important instructions for Flooded Lead-Acid Battery Systems that should be followed during the installation and maintenance of the battery system.

[Tennessee Childhood Lead Poisoning Prevention Program](#)

The Tennessee Childhood Lead Poisoning Prevention Program (CLPPP) screening, testing and follow-up guidelines are based on the latest recommendations of the Advisory Committee on Childhood



Lead Hazard Reduction Program

Lead is a toxic metal used for many years in products found in and around our homes. Although lead-based paint was banned for use in residential structures in 1978, deterioration of old

C & D Technologies , Guides & Manuals

Whether you're looking for installation instructions, maintenance tips, or troubleshooting help, our resources are designed to support safe and efficient battery use for data centers, telecom providers,



[Tennessee Department of Health Childhood Lead Poisoning](#)

This plan was prepared by the Tennessee Department of Health, Childhood Lead Poisoning Prevention Program. The Centers for Disease



Control and Prevention (CDC) encourages each state to develop

Lead Certification

The Lead-Based Paint Abatement Program is a part of the Division of Land Protection. Individuals seeking certification to conduct lead abatement activities in the State of Tennessee must

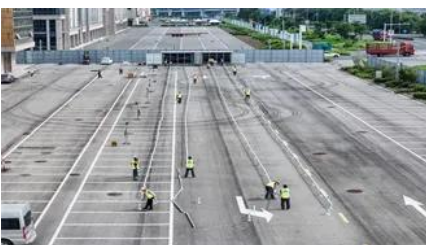


TELEDYNE BATTERY PRODUCTS

Teledyne Battery Products is committed to utilizing/developing synergies within the Teledyne group of companies to continue providing unsurpassed product integration enabling customers' ease of use

[Health Consultation Public Health Implications of Exposures to](#)

Health Consultation: A Note of Explanation A health consultation is a verbal or written response from ATSDR to a specific request for information about health risks related to a specific site, a chemical



Lead and Copper Rule

Lead and Copper Rule Revisions On December 16, 2021, EPA announced the next steps to strengthen the regulatory framework on lead in drinking water. During the next two years, TDEC will be

[Childhood Lead Poisoning Prevention Program](#)

The Childhood Lead Poisoning Prevention Program supports the Tennessee Department of Health's efforts to prevent childhood poisoning and optimize health by ensuring access to care through local



Lead-Based Paint Abatement Activities

Lead-Based Paint Abatement Activities Rule Chapter 0400-13-01-Lead-Based Paint Abatement became effective June 5, 2024. It replaces and amends Chapter 1200-01-18, which was

[Smarter resilience: Advanced maintenance and battery technologies](#)

Discover Vertiv(TM) EnergyCore Lithium cabinets, featuring its intelligent, condition-based battery health management and advanced Lithium-ion technology, and how it transforms data center



Contact Us

For catalog requests, pricing, or partnerships, please visit:
<https://www.european-startups.eu>