

Solar container battery continues to discharge



Overview

If your battery drops from 80% to below 20% overnight or triggers low-voltage alarms sooner than expected, the issue could be high electrical loads, phantom power draw, or an undersized system. Start by fully charging the battery, then disconnect all loads and monitor its state of.

Solar container battery continues to discharge



[Prevent Solar Battery Over-Discharge: Tips for LiFePO4](#)

Prevent solar battery over-discharge with expert tips. Learn to troubleshoot, protect LiFePO4 batteries, and extend lifespan for off-grid systems.

[Design home solar online using prices of solar providers near you](#)

Uses local climate data, your roof measurements, current local electric rates and current solar system cost to generate an accurate solar cost and savings estimate, customized for your home.



[SignatureSolar : Solar Panels, DIY Off-Grid Solar, Server Rack](#)

Signature Solar provides solar panels & components and full kits for off-grid, grid-tie and custom diy solar systems. Providing Solar 101 and hands on experience within the solar industry.



[Oklahoma City, OK Solar Panels: 2026 Costs, Incentives & Savings](#)

Solar panels allow you to generate electricity at home, reducing how much you draw from the grid. That means rising utility rates have less impact on your monthly energy costs - because you control



[Why is My Solar Battery Discharging So Quickly: Common Causes](#)



[Why Is My Solar Battery Discharging So Quickly Common Causes](#)

In this DIY solar power station build, I'll show you how to create a reliable off-grid setup for recharging your power tool batteries using the Dr. Prepare 12V 100Ah PowerMax Battery with Max Hub, a 100W

Discover why your solar battery may be discharging quickly in our insightful article. Explore key factors such as insufficient solar input, high energy consumption, and battery age.



[Case Study: Resetting a BMS After an Over-Discharge](#)

This case study provides a step-by-step BMS over-discharge reset procedure to safely recover your LiFePO4 battery and restore power. Learn the

What is plug-in solar (balcony solar)?

Plug-in solar, also called balcony solar, are solar panels that connect to a standard power outlet. They supply power directly to your home. They are a plug and play way to reduce our



Solar Energy

There are two main types of solar energy technologies-photovoltaics (PV) and concentrating solar-thermal power (CSP). On this page you'll find resources to learn what solar

How To Fix Solar Battery Over Discharge?

This comprehensive guide aims to help you identify and fix solar battery over discharge by addressing the root causes, such as improper maintenance, faulty fittings, or imbalanced

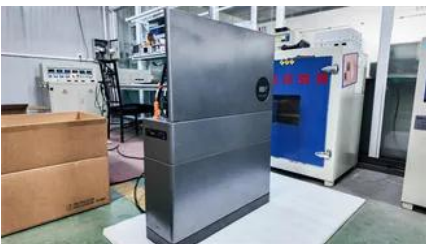


loads.



[Common Solar Battery Problems and How to Fix Them](#)

Experiencing issues with your solar battery? Learn the most common faults, how to troubleshoot them, and when to call a professional.



Solar , Get Binding Solar Quotes Online

100% online experience guaranteed to find you the best solar panels for your home. Find solar panels, solar reviews, solar financing, and solar quotes.



Homeowner's Guide to Solar

When it comes to installing solar, our resources

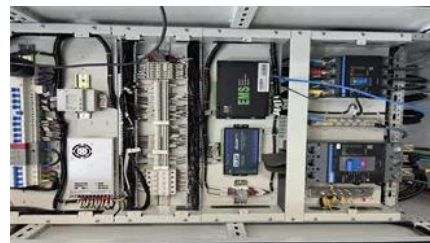
Home Solar Panels and Systems , Tesla

Learn about installing and generating your own clean energy for your home with solar and home batteries.



[How to Fix Solar Battery Over Discharge: A](#)

Discover how to fix solar battery over discharge with our comprehensive guide. Gain useful insights on prevention and optimal performance.



Solar Panels

Installing solar panels can help you save money on your electricity bill and reduce your carbon footprint. Additionally, solar panels can increase the value of your home and provide you with a reliable energy

can help you determine the best options.



[Common Solar Battery Discharge Problems and Fixes](#)

If the battery continues to drain, grab a multimeter or use a battery monitoring system to track any ongoing power draw. Once you detect an issue,

[Why Batteries in Series Discharge Too Fast and How to Fix It](#)

Wiring batteries in series is one of the most common and effective approaches to increase the overall system voltage. This method is widely used in applications such as solar energy



[Battery drains overnight with no load : r/SolarDIY](#)

If the cell capacity is very low the time to charge and discharge the pack would be very short. Your graphs don't really show much charge time but it appears that the voltage recovers very quickly in

[SOLAR , Division of Information Technology](#)

Students use SOLAR to register for classes, print schedules, view and pay bills, update personal contact information, view transcripts, and submit student employment timesheets.



Contact Us

For catalog requests, pricing, or partnerships, please visit:
<https://www.european-startups.eu>