

Solar panels connected in series generate electricity in watts



Overview

Whether you connect solar panels in series or in parallel, the total power output (in Watts) is the sum of the power generated by each solar panel.

Solar panels connected in series generate electricity in watts



Homeowner's Guide to Solar

When it comes to installing solar, our resources can help you determine the best options.

What is plug-in solar (balcony solar)?

Plug-in solar, also called balcony solar, are solar panels that connect to a standard power outlet. They supply power directly to your home. They are a plug and play way to reduce our



[Solar Panel Series Vs Parallel: Wiring, Differences, And](#)

Whether you connect solar panels in series or in parallel, the total power output (in Watts) is the sum of the power generated by each solar panel.

[Solar Panels Series and Parallel Calculator](#)

Definition: This calculator determines the total voltage, current, and power output of solar panels connected in series and parallel configurations. Purpose: It helps solar installers and DIY enthusiasts

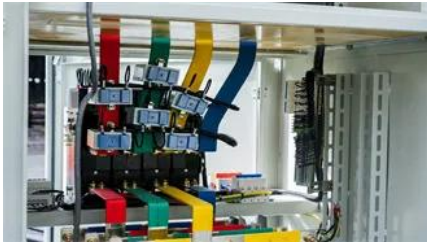


10 Best Solar Companies in Corning, CA

Installing solar panels can cut your electricity costs and help the environment by reducing your carbon footprint. When deciding if a solar provider is the best option for you, consider these key

[Solar Panel Wiring Guide: Series, Parallel & Hybrid](#)

Solar charge controllers protect the batteries and regulate the energy coming from the panels. The two main technologies are PWM, which is



Solar , Get Binding Solar Quotes Online

100% online experience guaranteed to find you the best solar panels for your home. Find solar panels, solar reviews, solar financing, and solar quotes.

[Design home solar online using prices of solar providers near you](#)

Uses local climate data, your roof measurements, current local electric rates and current solar system cost to generate an accurate solar cost and savings estimate, customized for your home.



[Series Vs Parallel Solar Panels: Wiring Guide & MPPT](#)

Can I mix different wattage solar panels in series or parallel configurations? In series configurations, mixing different wattage panels is not

Solar power

Solar power, also known as solar electricity, is the conversion of energy from sunlight into electricity, either directly using photovoltaics (PV) or indirectly using concentrated solar power.





Solar Panel Series & Parallel Calculator

Calculate solar panel string configurations instantly. Find the right series/parallel wiring for your system voltage, current, and panel count with our free calculator.

Solar Panel (Power) Calculator

Solar Panel Calculator is an online tool used in electrical engineering to estimate the total power output, solar system output voltage and current when the



[Best solar companies in Corning, CA: Our 2026 picks](#)

Get the most out of your solar panels by choosing a top-rated solar installer that will do the job right. We reviewed Corning, CA solar companies on the EnergySage Marketplace to help you find the best one

[Solar Panel Series and Parallel Calculator](#)

The calculator will return values for maximum power output, maximum power voltage, maximum power current, and power loss for series



[Solar News , Today's Latest Stories , Reuters](#)

Reuters is your online source for the latest news stories and current events, ensuring our readers up to date with any breaking news developments

[Solar Panel Series and Parallel Calculator](#)

Enter your solar panel's voltage (V_{mp}), current (I_{mp}), and the number of panels you're wiring together. Then hit Calculate to instantly see total voltage, current, and wattage for both series and parallel wiring.



[Solar Panels: Compare Costs, Reviews & Installers . SolarReviews](#)

Use our calculator to quickly get price cost estimates for solar tailored to your home. SolarReviews has both an extensive collection of unbiased consumer reviews of U.S. solar companies and an expert

[Connecting Solar Panels in Series Vs Parallel](#)

In a solar array, wattage increases in a series panel setup. This happens because a larger voltage is generated by adding the voltage of each



[Solar Power Installation . Development . Technology News and Features](#)

Solar Power World is the leading online and print resource for news and information regarding solar PV installation, development and technology.

Contact Us

For catalog requests, pricing, or partnerships, please visit:
<https://www.european-startups.eu>