

Special Shape of Photovoltaic Panels



Special Shape of Photovoltaic Panels



Shapes of Solar Panels for 2026

Discover the different shapes of solar panels available in 2026. Learn which panel shape works best for your home, roof type, and energy needs.

[Custom Shaped Solar Panels , Voltaic Systems Blog](#)

Yes, it is possible to make a solar panel in a custom shape. At Voltaic, we manufacture custom and standard small solar panels and while most are rectangular, we have experience designing and



[How to remap special keys on Asus laptop?](#)

No luck, these special keys on my laptop don't appear to generate scancode or keypress events. (got this idea from a StackOverflow answer, too bad it didn't work for me) Update, 4 years

[How can I type special characters in Linux?](#)

In Windows, there is the possibility to type special signs from the keyboard by holding the Alt key and typing a few numbers, that depends on which sign you want to use. Does it work with



[Why can't you use special characters in a filename, like "?" or](#)

When I try to save a file, if I use special characters in the name (such as a colon, question mark, or exclamation point) in Windows I get a message saying that the file name is invalid.

[The 6 types of solar panels , What's the best](#)

Discover the six main types of solar panel, including thin-film, perovskite, and the best type for your home: monocrystalline.



[How do I enable Windows special permissions in the security tab?](#)

I need to enable the special permissions on the basic tab of security properties, I tried using anything, icacls cmd, etc. Is there a way to check that box?

[Notepad++ inserting special Unicode characters in UTF-8](#)

What's the best ways to enter special Unicode characters into a Notepad++ document? Do I have to rely on the operating system (Windows)? Looking for a see-and-click solution. I can bring up the AS

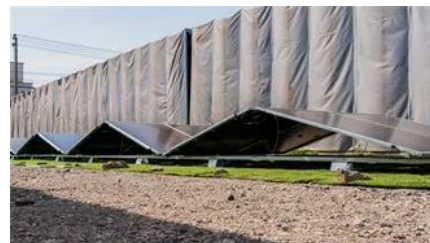


[Windows Explorer sorting order for special characters?](#)

What is the sorting order used in Windows Explorer? I was specifically wondering what special characters sort after the alphabets? As far as I can tell (test), all special characters seem to be

[Shortcut in Word or Excel for Special Paste?](#)

On Word 2007 to 2013 on Windows, you can use Ctrl + Alt + V. On Word 2011 for Mac, you can use Control + Command + V. Both of these will bring up the "Paste Special" dialog. There's



[Which Special Character Set is accepted in WPA2-PSK passwords?](#)



[Excel destroying special character when saved as CSV](#)

The problem is, whenever the client saves the excel spreadsheet as an MS-DOS .csv file, many of the special characters get converted to question marks "?" (symbols such as ' " /).



Apparently the WPA2-PSK password can have a length ranging from 8 to 63 characters. Letters, numbers, and special characters can be used. I would like to know what special characters can be



[Is there an Excel formula to identify special characters in a cell?](#)

Here's a conditional formatting solution that will flag the records with special characters. Just apply a new conditional formatting rule to your data that uses the (extremely long) formula below, where A1

Contact Us

For catalog requests, pricing, or partnerships, please visit:
<https://www.european-startups.eu>