

**The larger the inverter voltage
the larger the ripple**



Overview

The culprit might be feedback ripple voltage - unwanted AC voltage fluctuations superimposed on DC signals. Think of it like waves disrupting a calm pond; these ripples reduce energy efficiency and damage sensitive components over time.

The larger the inverter voltage the larger the ripple



[How to pronounce fractions with denominators larger than 20 where](#)

How to pronounce fractions with denominators larger than 20 where the last digit of the denominator is 1 or 2? eg 4/31 Ask Question Asked 10 years, 8 months ago Modified 5 years, 2 months ago

[Understanding and Mitigating Inverter Feedback Ripple Voltage in](#)

Summary: Inverter feedback ripple voltage is a critical challenge in renewable energy systems. This article explores its causes, impacts on solar installations, and proven solutions.



[Does "increasingly larger" imply an increasing rate of growth?](#)

We often say things become "increasingly larger/bigger", like "The problem of [] is becoming an increasingly larger issue". I was wondering if the addition of the word "increasingly" is

[Analysis of Input Current Ripple and Optimum Filter Capacitor for](#)

Analysis shows that there exists a negative-current zone for a FCS connected to a single-phase inverter producing line-frequency sinusoidal voltage for any power factor other than unity. A suitable input



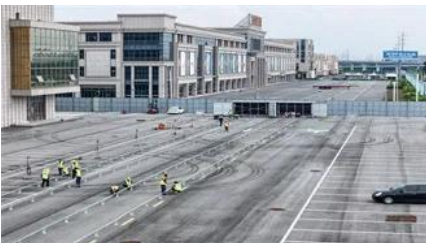


[Word for larger system that is more than the sum of its constituents](#)

The word describes the phenomenon of a larger organised system that does more or has another function than the collective sum of its constituent parts. Or the other way round when lots of

word choice

I was wondering which one is more correct between "the larger of A and B" and "the larger of A or B". I use the former, but I saw in IRS instruction for Form 1040: In most cases, your



[DC-Link Ripple Current Reduction Method for Three-Level Inverters](#)

This paper presents an optimized switching strategy to reduce the dc-link ripple current for three-level photovoltaic (PV) inverters. The large electrolytic capacitors are commonly used for the dc link of

grammar

Would it be ok to say "from smaller to larger" or do I have to say "from smallest to largest" E.g., I'm using the batteries from smallest/smaller to largest/larger capacity.



[What should be the maximum allowable input ripple voltage in design](#)

The upper limit of dc-link capacitor voltage ripple is 5% of the peak value. The lesser is better.

[Difference between "greater" and "larger"](#)

What is the difference between greater and larger? For example, should we say for time, the waiting time is greater than or the waiting time is larger than?



[Understanding, Measuring, and Reducing Output Voltage Ripple](#)

Depending on the type of output capacitor, the values of its parasitic elements could be quite different and consequently the shape and amplitude of the output ripple voltage will vary.

[Word for a small space/dwelling that is much larger on the inside than](#)

I'm searching for a rare word that means a small space/dwelling that is much larger on the inside than it appears from the exterior. It has been in 2 stories I know of: shown as a magical



[Selecting the Right Inductor Current Ripple . Analog](#)

This discusses the different things to consider in selecting the right inductor current ripple.

["The number of students are larger" vs. "The number of students is](#)

What is the correct verb to use, is it is or are? A) The number of students are larger than before. B) The number of students is larger than before.



[Maximum power extraction and DC-Bus voltage regulation in grid](#)



Inverter DC ripple voltage specification

This is presumably a major reason why Victron limit the ripple voltage at the inverter terminals, to avoid excessive heating of the input capacitors inside the inverter.

In this study, the maximum permitted voltage ripple and input dc voltage are used to determine the size of the DC-Bus capacitor. It is observed that when the DC input voltage rises, the capacitance



[What is the correct adjective for weight/mass of objects, heavy or](#)

The units of mass or any other qualified noun are irrelevant: a mass of 10 kg is larger than that of 1 kg whether you measure the mass in kg, tonnes, ounces or milligrams. And I do say "large"

[Ripple Current Analysis of Three-level Inverter based on SVPWM](#)

Since the output of inverter adopting SVPWM does not contain low order harmonics, the power grid voltage is equivalent to a short circuit when higher harmonics are concerned only.



[Diameter comparison: larger, bigger, higher, greater?](#)

Going by Google result hits "larger diameter" 7'420'000 results "greater diameter" 1'020'000 results "higher diameter" 852'000 results "bigger diameter" 738'000 results So after this I

[Analysis of the effects of inverter ripple current](#)

[on a photovoltaic](#)

In this study an AC impedance model of a solar cell module is developed using Impedance Spectroscopy and it is then used for evaluating the effects of the ripple current generated by a single



Contact Us

For catalog requests, pricing, or partnerships, please visit:
<https://www.european-startups.eu>