

# The power generation of one acre of solar panels



## Overview

---

An acre of solar panels typically generates around 350,000 to 400,000 kWh annually. homes for a year, making it a significant renewable energy source.

## The power generation of one acre of solar panels

---



[Power Query code to refer to another query \(and how buffering works\)](#)

Is this just part of the building process? Or If I have one query A that loads across the network and 5 follow up queries that refer to query A will power query / excel be reading the across

[How Many Homes Can 1 Acre of Solar Panels Supply: Solar Panel](#)

In summary, 1 acre of solar panels can power approximately 30 to 50 homes, depending on various factors such as sunlight exposure, panel efficiency, and local electricity consumption.



[How many homes can 1 acre of solar panels supply?](#)

How many homes can 1 acre of solar panels supply? The power generation capacity of 1 acre of solar panels depends on several critical factors,

### **formatDateTime in Power Automate Desktop**

You are confusing Power Automate with Power Automate Desktop. The link you provide is for Power Automate, so those functions won't work in the PADesktop. There is an action named



[Power BI: excluding a visual from a slicer](#)

On the Power BI Desktop menu, select the



### [Power Automate - Some SharePoint List Columns Not Appearing in](#)

I'm working on a Power Automate flow that updates items in a SharePoint Online list. However, I'm facing an issue where certain columns (including Person/Group fields) are not



### [How to Read CSV file using Power Automate?](#)

You can retrieve the contents of the CSV file using the Get file content action in Power Automate/Microsoft Flow, and then using the Parse CSV action to transform the file contents into a



### [Refresh powerBI data with additional column](#)

In Power BI Desktop, right-click on your dataset

Format menu under Visual Tools, and then select Edit interactions. You need to have the slicer selected. Only then you see the according Filter



### [Extract Value from Array in Power Automate](#)

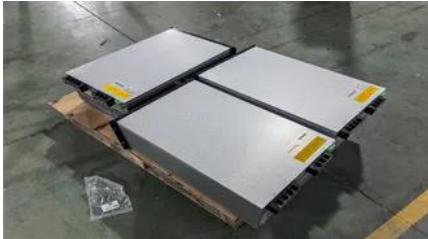
Extract Value from Array in Power Automate  
Asked 1 year, 5 months ago Modified 1 year ago  
Viewed 8k times



### [How do I refresh an Excel Power Query using Power Automate Online?](#)

0 I have data being pulled from a SharePoint list to an Excel file and I'm trying to use Power Automate online to create a scheduled flow that will trigger the "Refresh All" button for Power

under Fields ('VoterList' in this case), and select Edit query: In Power Query Editor, select Advanced Editor: In Advanced Editor, increment



### [How Much Energy Does 1 Acre of Solar Panels Produce?](#)

On average, one acre of solar panels is estimated to produce approximately 350 to 450 megawatt-hours (MWh) of electricity each year, with a frequently cited average of around 400 MWh annually.

### [Running Python scripts in Microsoft Power Automate Cloud](#)

I use Power Automate to collect responses from a Form and send emails based on the responses. The main objective is to automate decision-making using Python to approve or reject the



### [How can I use "e" \(Euler's number\) and power operation?](#)

How can I write  $1 - e^{(-value1^{2/2} * value2^2)}$  in Python? I don't know how to use power operator and e.

## Contact Us

---

For catalog requests, pricing, or partnerships, please visit:  
<https://www.european-startups.eu>