

What battery types are used for energy storage



What battery types are used for energy storage



[Energy Storage Batteries: A Complete Guide to](#)

Understanding these differences helps users choose Energy Storage Batteries that best match Home Solar Storage or Grid-Scale Battery Systems-read on to see

Household Battery Recycling

Household battery recycling locations Lead-acid batteries, or "automotive type batteries," are banned from disposal. Consumers may bring lead-acid batteries to any Wisconsin retailer that sells these

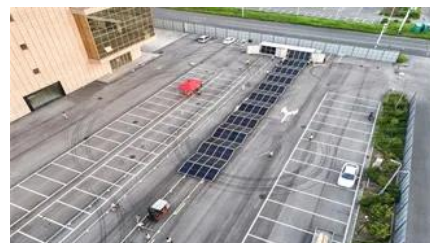


[Multiple Warning Lights/Error Messages/Battery deterioration](#)

TBH I would look at a replacement battery on the back of that info - but can't you get one from where you bought it? I don't know what a compliance centre is but does the vehicle come with

Battery energy storage system

A battery energy storage system (BESS), battery storage power station, battery energy grid storage (BEGS) or battery grid storage is a type of energy storage



Main Battery Change

Going to change the service battery in my 15 V40cc D2. Anything I need to be ware of or look



[Battery types and recent developments for energy storage in electric](#)

EVs use various battery types, including lithium-ion (Li-ion), lead-acid, nickel-cadmium, and nickel-metal hydride (Ni-MH), with Li-ion batteries being the most popular due to their energy



out for ??



[Types Of Energy Storage Technologies: Complete Guide](#)

Comprehensive guide to energy storage technologies including batteries, mechanical, thermal, chemical & electrical systems. Compare costs, applications & performance.

Main Battery Replacement

Since that battery also supplies power to the ECU memory when the car is switched off, as well as powering the stop/start system, don't ignore it. Like the main battery, Volvo recommend



Battery Recycling for Businesses

Battery Recycling for Businesses Use the chart below to determine how to handle used batteries generated by your business. Batteries that are considered hazardous must be recycled or managed

"Low Battery Charge" HELP

Have the battery checked at dealers - and just using a multimeter on the battery won't show duff cells in the battery. A new battery-cured mine - any decent auto-electric garage could do it.



[What Types of Batteries Are Used in Energy Storage Systems?](#)

Learn about the most common battery types used in energy storage systems, their pros and cons, and how to choose the right battery based on real-world applications.

Types of Batteries

Explore the types of batteries, including lithium-ion, lead-acid, and more, to understand their roles in energy storage, efficiency, and



Secondary Battery

My main battery just died, had it replaced with same, and car kept giving me Battery charging, so no stop start. When stop/start worked, it was for about 10 sec, and car would start, with

[What Are the Different Types of Battery Energy Storage](#)

Battery energy storage systems come in various types, including lithium-ion, lead-acid, and flow batteries, each suited to different applications.



[Low battery charge error , Volvo V40 Forums](#)

Hello everyone, I just bought my first car, a 2014 Volvo V40 T3, and a warning appears on the dashboard that says 'low battery charge.' The car

is recently

Low battery charge message

The low battery charge message relates to the main battery. On vehicles with stop/start systems and intelligent alternators, the vehicle battery is designed to operate at around 80% SOC, to



Energy Storage Systems: Batteries

Energy Storage Systems: Batteries - Explore the technology, types, and applications of batteries in storing energy for renewable sources, electric

[Types of Battery Energy Storage Systems: A Complete](#)

Explore the different types of battery energy storage systems, including Lithium-Ion, Lead-Acid, and Flow batteries. Learn which BESS fits



[How to Choose from 5 Types of Solar Batteries](#)

Learn what a Battery Energy Storage System (BESS) is, explore various types including lithium-ion subtypes, and discover key factors to select

Battery issues

I've had both batteries replaced (with the correct models), done a 100 mile trip, overnight smart battery charge, charging voltage is fine, system messages cleared but I am still getting "low



Contact Us

For catalog requests, pricing, or partnerships, please visit:
<https://www.european-startups.eu>