

What is PERC in solar modules



What is PERC in solar modules



[What Is PERC Solar Cell? Definition & Guide , SurgePV](#)

A PERC solar cell (Passivated Emitter and Rear Cell) is an advanced version of the conventional aluminum back-surface field (Al-BSF) solar cell. PERC adds a dielectric passivation layer - typically

[Septic Design , Perc Test , Drone Services , Geologist , California](#)

Drone Services and Consulting Geologist specializing in perc tests, septic design, engineered septic, nitrogen loading analysis, SMARA, mineral remoteness report. Serving Northern and Central California.



[Ultimate Guide to PERC, TOPCon, and HJT Modules](#)

PERC (Passivated Emitter and Rear Cell) improved on BSF cells with rear-side passivation. You get mature supply, low upfront cost, and wide



[How Much Does a Perc Test Cost? \[2025 Data\]](#)

You'll need a percolation test-commonly called a "perc test"-to determine if the soil can absorb and filter water properly. Hiring a professional for a perc test costs between \$750 and \$1,900,



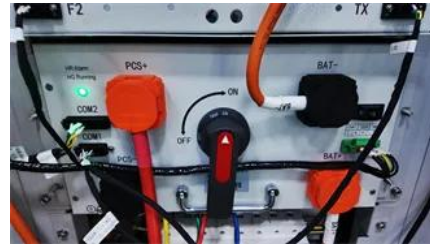
PERC Rule Calculator

The PERC rule reveals patients who are at low risk of pulmonary embolism in an accurate and rapid manner so differential diagnosis can be initiated. It is most often used in the assessment

of patients

[Percolation Testing in California , Speedy Perc Testing](#)

Percolation testing, also known as soil testing or infiltration testing, is a crucial step in determining the suitability of land for various construction projects, particularly those involving septic systems or



[Perc Testing in California , Macks Perc Testing](#)

Perc testing, also known as soil percolation testing, plays a crucial role in determining the suitability of a site for septic system installation. This process involves evaluating the soil's ability to absorb and

PERC rule

In patients with a low probability of PE who fulfill all eight criteria, the likelihood of PE is low and no further testing is required. All other patients should be considered for further testing with sensitive D



[PERC Solar Cells Explained: The Dominant Technology \(And Why It's](#)

PERC (Passivated Emitter and Rear Cell) is the solar cell technology that dominates the global market, adding a thin dielectric passivation layer to the rear surface of the cell to reduce electron

[MDCalc Wars: Stop Before the CT! - Are You Using PERC or Wells](#)

Confused about when to use Wells or PERC for pulmonary embolism? Learn how to apply each tool correctly to reduce unnecessary CT scans without missing a diagnosis.





[Perc Testing in Sacramento , Perc Testing](#)

Professional perc testing in Sacramento, CA. Get precise results to support septic system installation and property development.

[What Does PERC Mean in Solar Panels? Key Insights Explained](#)

PERC, or Passivated Emitter and Rear Cell, is a technology used in solar panels that enhances their efficiency and performance. Understanding PERC can help you make better



[What Is a PERC Solar Panel and How It Works?](#)

But what exactly are PERC cells, and how do they differ from traditional solar panels? This article will walk you through the fundamentals of PERC technology, its working mechanism, and why

PERC Rule for Pulmonary Embolism

There is no need to apply the PERC rule to those patients who are not being evaluated for PE. If the patient is considered low-risk, PERC may help avoid further testing. If the patient is moderate or high



What is PERC Solar Cell And How It Works

PERC stands for "Passivated Emitter and Rear Cell" and refers to a modification of traditional crystalline silicon solar cells. By adding special layers

[Puzzling out the PERC rule o LITFL o Pulmonary Puzzler](#)

One of the validation studies (Kline et al, 2008)

was a multi-center study that included patients with a primary complaint of shortness of breath or chest pain. Thus, I think that the PERC



[PERC Solar Cells: What Are They & How Do They](#)

What Are PERC Solar Cells? PERC - Passivated Emitter and Rear Contact or Passivated Emitter and Rear Cell - solar cells are a relatively new

[What are PERC Solar Panels? A Comprehensive Guide to Modern Energy](#)

PERC solar panels refer to solar panels that have Passivated Emitter and Rear Contact (PERC) technology, a feature



[What you need to know about PERC solar cells](#)

What are PERC solar panels and how do they work? First introduced in 1989, PERC panels are modified silicon cells that have an additional layer on the

Contact Us

For catalog requests, pricing, or partnerships, please visit:
<https://www.european-startups.eu>