

# What is the best angle for installing photovoltaic panels



## Overview

---

The optimal tilt angle for solar panels typically equals your location's latitude. You can fine-tune this by subtracting 10-15 degrees for summer optimization or adding 10-15 degrees for winter.

## What is the best angle for installing photovoltaic panels

---



### [Solar Panel Direction & Orientation: 2025 Complete Guide](#)

Discover the optimal direction and angle for solar panels to maximize energy output. Complete guide with calculations, tools, and location-specific

### articles

The word "best" is an adjective, and adjectives do not take articles by themselves. Because the noun car is modified by the superlative adjective best, and because this makes the

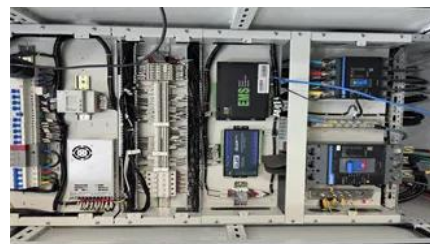


### grammar

So, " It is the best ever " means it's the best of all time, up to the present. " It was the best ever " means either it was the best up to that point in time, and a better one may have

### adverbs

Both sentences could mean the same thing, however I like you best. I like chocolate best, better than anything else can be used when what one is choosing from is not specified I like you the



### [Best Angle for Solar Panels: It's Not Your Latitude](#)

Learn how to get the best angle for solar panels for your location, or calculate your optimal solar panel tilt angle with our free calculator.

### "better" vs "best"

The second sentence, as you said, contains a superlative, "best." In English, unlike in some other languages such as Spanish, the superlative does not require a definite article. In fact, it



### [The Best Angle for Solar Panel Installation](#)

In general, solar panels should be installed so the sunlight hits them at as close to a perpendicular 90-degree angle for as long as possible during the

### superlatives

Consider the phrase "one of" as a synonym for "among". This way, your sentence reads: "Honda and Toyota are among the best selling cars in the US " I hope this clarifies this particular



### [What's the Best Angle for Solar Panels to Get](#)

Learn how to calculate the best tilt angle for home solar panels in 2026. Includes seasonal adjustments, PVWatts guidance and energy

### "What was best" vs "what was the best"?

In your context, the best relates to {something}, whereas best relates to a course of action. Plastic, wood, or metal container? What was the best choice for this purpose? Plastic, wood,



### ["Which one is the best" vs. "which one the best is"](#)



"Which one is the best" is obviously a question format, so it makes sense that " which one the best is " should be the correct form. This is very good instinct, and you could even argue that

### [What's the Best Angle for Solar Panels? . EnergySage](#)

For maximum output, the sweet spot for solar panels in the continental U.S. is facing roughly south and tilted between 15 and 40 degrees,



### [Best Angle And Orientation For Solar Panels - Forbes](#)

For most homeowners, the ideal angle for a solar panel installation is close to or equal to the latitude of your home. This angle is typically between 30

### **Solar Panel Angle Calculator**

Generate the best tilt for your solar panels with our Solar Panel Angle Calculator for maximum energy efficiency all year round.



### **Solar Panel Angle Calculator**

Find the best tilt angle for your solar panels by location for optimal year-round, summer, and winter performance. Includes interactive visualizer and advanced

### [Solar Panel Best Angle , Tilt & Orientation Guide 2025](#)

In this guide, we'll break down the science behind the best solar panel angle, explain how to



calculate it based on latitude, show seasonal



[Solar Panel Angle Calculator by Zip Code: best Tilt](#)

Solar Panel Angle Calculator This calculator use a series of global models that will calculate your optimum annual tilt angle based on your latitude

**definite article**

I mean here "You are the best at tennis" "and "you are best at tennis", "choose the book you like the best or best" both of them can have different meanings but "most" and another adverb in



**how to use "best" as adverb?**

Your example already shows how to use "best" as an adverb. It is also a superlative, like "greatest", or "highest", so just as you would use it as an adjective to show that something is the

[Why does "the best of friends" mean what it means?](#)

The best of friends literally means the best of all possible friends. So if we say it of two friends, it literally means that the friendship is the best one possible between any two people. In its



**Contact Us**

For catalog requests, pricing, or partnerships, please visit:  
<https://www.european-startups.eu>